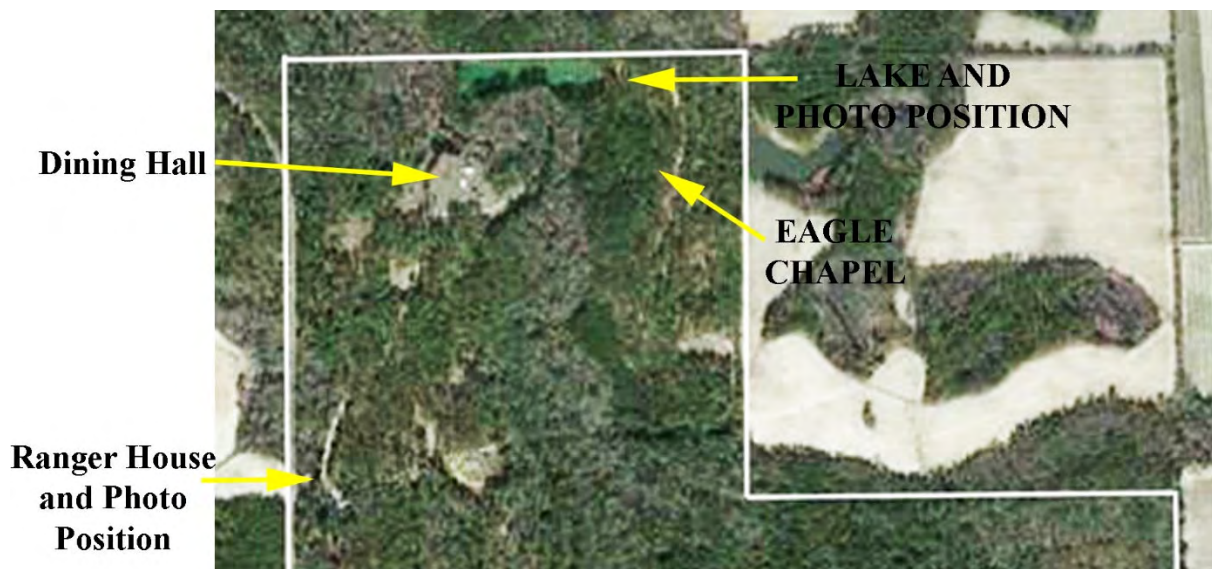


Appendix 148 to
THE HISTORY OF SCOUTING IN SOUTH GEORGIA
Appendix Updated on: January 8, 2025)

**Photos of Camp Osborn
Showing the Regrowth
of Various Parts of the Camp**

View from the Ranger's House at the Old Main Gate

I have no before photos taken in the same direction. But, the photos below are taken standing just the other side of the big oak on the left side of this 2014 photo. Below that is an aerial photo from 2016 showing how dense the forest was and the location of the photos.





Just after the January 2017 tornados. It is over one-half mile from this position at the ranger's house to the dining hall. The zoom lens distorts the perspective.

No 2018 photo was taken as rebuilding was still in progress

The 2019 photo is missing.



January 2020 view from the Ranger House.



In January 2021, you can see the tops of the pine trees showing above the brush grass. The pines are anywhere from 4 to 6 feet tall now and are much taller than they appear in the photo due to the zoom on the photo.



In January 2022, the trees have grown a great deal, but are hidden from this angle by the brush.



In January, 2022 a reverse view from the dining hall back toward the ranger house.



The February 2023 photo from the ranger house.



The February 2023 photo from the dining hall to the ranger house.
(The day of these photos there was extensive smoke in the air from burning fields.)



The January 2024 photo from the ranger house.



The January 2024 photo from the dining hall back to ranger house.



The January 2025 photo from the ranger house to dining hall.



The January 2025 photo from the dining hall back to ranger house.

Eagle Chapel on the Ridge



Just after the January 2017 tornados. This photo is looking northwest from the Ridge down the slope into Mill Creek and the lake.



Janaury 2019 taken from the same perspective.



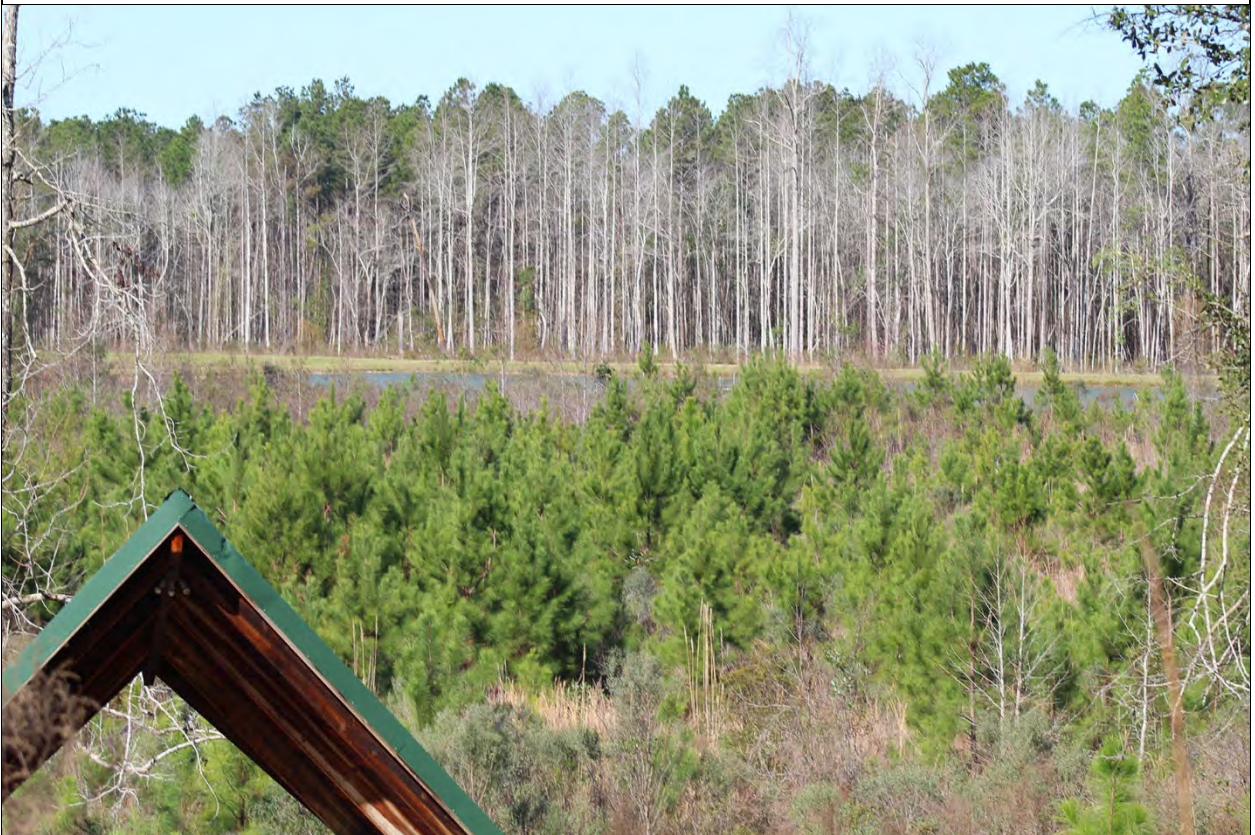
The January, 2020 photo is looking southeast from the lake and up the ridge.



January 2021, also looking southeast from the lake and up the ridge.



January 2022, also looking southeast from the lake and up the ridge.



January 2022, also looking southeast from the ridge down to the lake.



February 2023, also looking southeast from the ridge down to the lake.
(The day of these photos there was extensive smoke in the air from burning fields.)

No more photos were taken from the lake up to the Chapel because by 2023 the trees completely blocked the view of the Chapel.



January 2024, from the Chapel back to the lake



January 2025, from the Chapel back to the lake

