

Appendix 135 to
THE HISTORY OF SCOUTING IN SOUTH GEORGIA
Appendix Updated on: January 23, 2017

Camp Osborn Photos of the Damage from the 2017 New Year's Tornado

On Monday, January 2, 2017, a tornado struck Camp Osborn and Worth County.

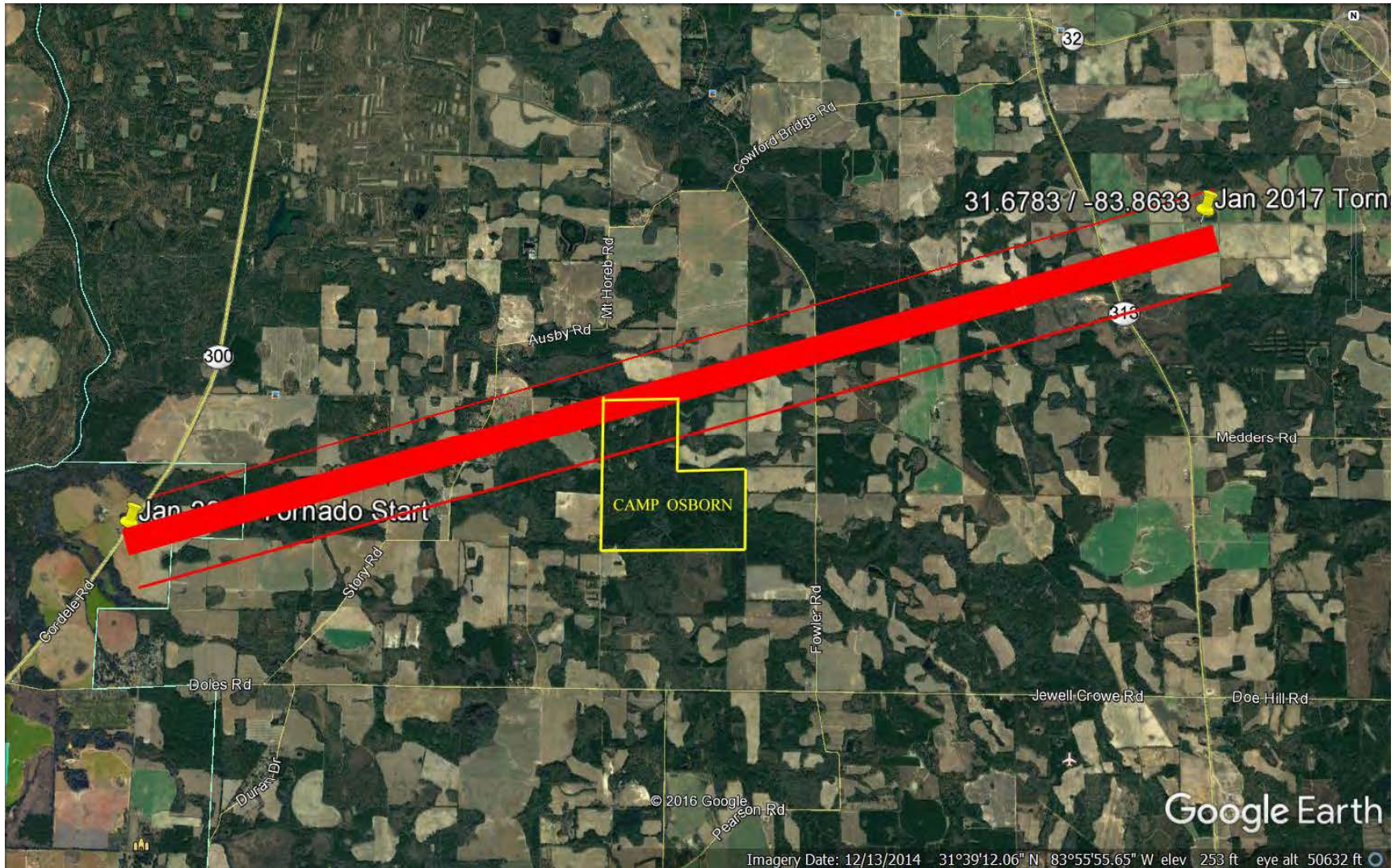
We had scouts and leaders on The Ridge at camp preparing for the upcoming NYLT course. For a short time, we could not make contact with them and even after we did they were stranded on The Ridge due to the trees on the roads. The Georgia Forestry Commission responded quickly and got the roads opened to the back of camp to evacuate the scouts and leaders. Camp Ranger Eric Ginter did a great job managing the situation during this crisis.

Every power pole at camp was broken. Twenty-three buildings were damages to some degree, including: Cub World Pavilion was totally destroyed, Two Cub World Cabins were heavily damaged, The OA Burrow was heavy damaged, The Ben Turner Bridge was destroyed, The Double wide was destroyed, The Eagle Pavilion had damage to the roof, The Ranger House had major damage to the roof, The Shower House on ridge had major damage, There was slight damage to the Dining Hall, There was a Tree on the Chapel, and The Handicraft Pavilion was damaged.

Again on Sunday, January 22, 2017 another string of severe weather came through and Camp Osborn got hit by high winds. The First Aid Lodge took the brunt of the storm with the Eagle Pavilion sustained additional damage. Ellis Road was partially washed out. Our neighbors south of camp have been devastated and the south end of camp took a hard hit.

NWS Dougherty-Worth County Tornado Report

January 2, 2017 an EF-1 Tornado touched down just inside the Dougherty County line along Cordele Road before moving east northeast into Worth County. The tornado lifted just east of Highway 313. A total path of 9.16 miles and 600 yards wide.



WALB News Report from January 6, 2017

Officials confirmed an EF-1 tornado tore through Worth County.

"There's literally thousands of trees down here. We're just now being able to get to certain parts of the property," said Matt Hart, executive director of the South Georgia Boy Scouts of America.

Fallen trees line the trails through Camp Osborn, a reminder that Mother Nature was just here. "When the storms came through... we've been pretty much disseminated," Hart said looking at the campgrounds. And with the storms came one strong feeling. "The first thought was sheer panic," Hart recalled. Panic, because 15 boy scouts were spending the night at the camp as the severe weather struck. "It's mind blowing just thinking where we were planning on staying," said one scout leader, Sharon Scott, "Just to see the trees and everything. We could've lost every child that we had out there." The shelter where the boys were going to stay was crushed by trees. However, just like good scouts, the boys were prepared. Once they learned of storm warnings they moved. "When we got into the dining hall, most of the youngsters were huddled in the walk-in refrigerator," said leader Jeff Scott. Once the leaders arrived, everyone moved to the pantry to weather out the storm.

To get to the boys the Georgia Forestry Commission had to bulldoze a path. Hours later, when they were finally able to walk outside, the view was shocking. Drone footage of the campgrounds was captured. You can view it [here](#).

"It was a shock when we got out of here to actually see it in daylight," remembered Sharon, "The damage that was done around the camp. We were shocked." Of all the damage one place stood standing, with only a window broken. Joe T. Abernathy Dining Hall, the shelter that saved 15 lives. And now scouts are prepared to take the next steps. "We rebuild, we recoup, and we move forward," said Hart, "We scout on." A true story of putting their scouting skills to the test.



Keenan Lake



Shower House on the Ridge



The Georgia Forestry Commission responded quickly and got the roads opened to the back of camp to evacuate the campers.



Road work near the Dining Hall



The Fire Bowl



Cub World



Eagle Scout Chapel



**The Burrow
(Withlacoochee Lodge)**



The Old Staff Lien-Tos



The Craft Lodge





**First Aid Lodge
(Damage from the January 22 Storm)**

(The photos were uncredited on the Council website so I cannot give proper credit here.)